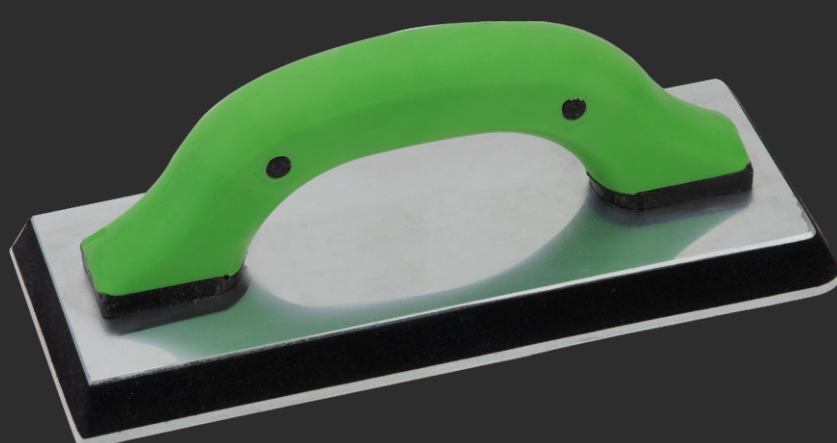


TECHNICAL DATA SHEET (PROFI FLEX FLOAT)



PRODUCT DESCRIPTION

This is a tool that's designed to apply grout or cement in spaces between mosaic, stones, and tiles. These floats are typically used by stone and tile installers. Once the grout is applied, the tile installer uses float to spread out the grout before pressing it into the cracks and crevices between tiles. The rubber pad prevents the float from catching the edge of a tile and cracking it. This Professional float smoothly fills the grout between tiles, and creates a continuous surface. Aluminium plate is for added for durability.

MATERIAL

Handle – polypropylene with Thermoplastic elastomers Coating
Metal plate – Aluminium
Foam – EVA
Tuff Rubber Sheet (White) – Natural Rubber

FEATURES

1. Durable Abrasion-resistant Rubber sheet.
2. Rubber sheet with very low water absorbing.
3. Low swelling in water & alkaline cement slurry.
4. 14mm thick EVA Foam with 2-rounded corners & 2 – angled corner.
5. Foam with taper profile at edges.
6. 1.5mm Thick aluminium sheet to prevent twisting & deformation.
7. TPE Coated handle for smooth grip.
8. Easy to clean.

DIMENSIONAL SPECIFICATIONS

Length – 240mm & width -100mm.
Length – 300mm & width -100mm.

PHYSICAL AND CHEMICAL PROPERTIES: -

| ITEM TEST | SPECS |
|------------------------------|-----------------------------|
| Cellular structure | Closed Cell |
| Density (kg/m ³) | 125 - 160 kg/m ³ |
| Shore (A)Hardness EVA Foam | 15 - 20 |
| Water Absorption by Weight % | Low |
| Temperature | Good at low temperature |

CHEMICAL COMPOSITION

| Chemical Composition | CAS No. | % Weight |
|----------------------|-----------|----------|
| ■ Boron | 7440-42-8 | 0.0011 |
| ■ Chromium | 7440-47-3 | 0.038 |
| ■ Iron | 7439-89-6 | 0.90 |
| ■ Manganese | 7439-96-5 | 0.31 |
| ■ Phosphorus | 7723-14-0 | 0.0007 |
| ■ Silicon | 7440-21-3 | 0.31 |
| ■ Calcium | 7440-70-2 | 0.0002 |
| ■ Nickel | 7440-02-0 | 0.015 |
| ■ Cadmium | 7440-43-9 | 0.0002 |
| ■ Aluminium | 7429-90-5 | 98 |
| ■ Lead | 7439-92-1 | 0.01 |
| ■ copper | 7440-50-8 | 0.146 |
| ■ Zirconium | 7440-67-7 | 0.001 |
| ■ Titanium | 7440-32-6 | 0.03 |
| ■ Vanadium | 7440-62-2 | 0.014 |
| ■ Bismuth | 7440-69-9 | 0.001 |
| ■ Tin | 7440-31-5 | 0.002 |
| ■ Antimony | 7440-36-0 | 0.0008 |
| ■ Zinc | 7440-66-6 | 0.1 |
| ■ Magnesium | 7439-95-4 | 0.119 |

PHYSICAL AND CHEMICAL PROPERTIES: -

| ITEM TEST | SPECS |
|---------------------------------|--------------------|
| Shore (A) Hardness Rubber Sheet | 55 - 60 |
| Water Absorption by Weight % | Low |
| Temperature range | -20 °C to +70 D °C |

STORAGE RECOMEDATION

Store in a cool well-ventilated place in original packing. Open packing while going to be used.

NOTE

- Product is in compliance with substance of Very High Concern (SVHC) i.e. ≤ 0.1 %w/w as per the candidate list promulgated by the European Chemicals Agency (ECHA) which are defined in Article 57 of REACH Regulation (EC1907/2006) checked by Tuv-Nord Group.