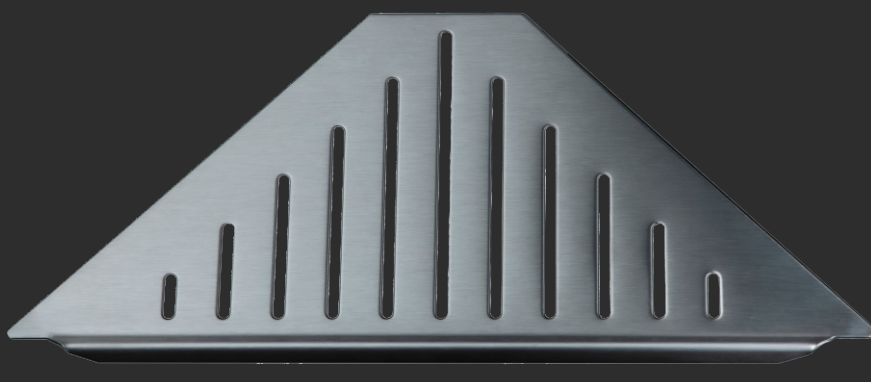


TECHNICAL DATA SHEET (GRID SHOWER SHELF)



PRODUCT DESCRIPTION

Shower shelf keeps shampoos, soaps, gels up high, out your way as you shower. The shelf is attached to the joint together with silicone. Fits in 90 degree corners. A shower shelf corner is economic with space, items placed in the bathroom are accessible out the way of potential slipping and spills. To make bathroom clean and organised, you can use shelf. These shelf ensure that everything in your bathroom is in order, and you do not need to search for things when you need them.

MATERIAL USED

Stainless Steel 316,304,430.

KEY FEATURES

- Excellent Performance: Hanging shower storage organizer is more durable, waterproof, rustproof, and not easily deformed.
- Unique Design: Unique design can drain and make the items dry quickly to avoid breeding bacterial. Perfect ideal for home storing.
- Easy Installation: Install and hang up shower storage organizers easily.
- Safe Load Bearing Capacity (kg) – 3 – 5
- Easy to clean & resist odor and germs.
- Powder coating thickness – 55 – 60 Microns.

DIMENSIONS

Sr. No.	Description	Color	Length (±2mm)	Width (±1mm)	Thickness (±0.1mm)	Side Edge (±0.2mm)
1	SLEEK CORNER	BLACK MATTE	268.5	118	1	10

STAINLESS STEEL GRADE 316

PHYSICAL PROPERTIES

- Density g/cm³ : 7.90
- Hardness (HV5) : 200

CHEMICAL PROPERTIES

- Superiorly Corrosion resistant.
- Acid resistant.
- Recommended to use in harsh environments.
- Heat resistance.

CHEMICAL COMPOSITION

Chemical Composition	CAS No.	% Weight
■ Carbon	7440-44-0	0.022
■ Chromium	7440-47-3	16.77
■ Iron	7439-89-6	67.91
■ Manganese	7439-96-5	1.761
■ Phosphorus	7723-14-0	0.039
■ Silicon	7440-21-3	0.359
■ Sulphur	7704-34-9	0.0055
■ Nickel	7440-02-0	10.24
■ Molybdenum	7439-98-7	2.074
■ Aluminium	7429-90-5	0.013
■ Cobalt	7440-48-4	0.21
■ copper	7440-50-8	0.403
■ Niobium	7440-03-1	0.019
■ Titanium	7440-32-6	0.0060
■ Vanadium	7440-62-2	0.069
■ Tungsten	7440-33-7	0.014
■ Tin	7440-31-5	0.012
■ Arsenic	7440-38-2	0.0075
■ Nitrogen	7727-37-9	0.066

STAINLESS STEEL GRADE 304

PHYSICAL PROPERTIES

- Density g/cm³ : 7.90
- Hardness (HV5) : 220

CHEMICAL PROPERTIES

- Standard Corrosion resistance
- Easy maintenance
- Not acid resistance

CHEMICAL COMPOSITION

Chemical Composition	CAS No.	% Weight
■ Carbon	7440-44-0	0.065
■ Silicon	7440-21-3	0.330
■ Manganese	7439-96-5	1.030
■ Phosphorus	7723-14-0	0.041
■ Sulphur	7704-34-9	0.006
■ Chromium	7440-47-3	18.250
■ Molybdenum	7439-98-7	0.240
■ Nickel	7440-02-0	8.240
■ Aluminium	7429-90-5	0.0034
■ Cobalt	7440-48-4	0.220
■ Copper	7440-50-8	0.360
■ Niobium	7440-03-1	0.0079
■ Titanium	7440-32-6	0.004
■ Venadium	7440-62-2	0.006
■ Tungsten	7440-33-7	0.021
■ Tin	7440-31-5	0.008
■ Arsenic	7440-38-2	0.003
■ Boron	7440-42-8	0.0007
■ Nitrogen	7727-37-9	0.024
■ Iron	7439-89-6	71.140

STAINLESS STEEL GRADE 430

PHYSICAL PROPERTIES

- Density g/cm³ : 7.90
- Hardness (HV5) : 175

CHEMICAL PROPERTIES

- Good Corrosion resistance
- Not acid resistance

CHEMICAL COMPOSITION

Chemical Composition	CAS No.	% Weight
■ Carbon	7440-44-0	0.080
■ Chromium	7440-47-3	16.420
■ Iron	7439-89-6	81.990
■ Manganese	7439-96-5	0.680
■ Phosphorus	7723-14-0	0.027
■ Silicon	7440-21-3	0.290
■ Sulphur	7704-34-9	0.004
■ Nickel	7440-02-0	0.160
■ Molybdenum	7439-98-7	0.014
■ Aluminium	7429-90-5	0.080
■ Cobalt	7440-48-4	0.031
■ Copper	7440-50-8	0.097
■ Titanium	7440-32-6	0.0037
■ Tungsten	7440-33-7	0.004
■ Tin	7440-31-5	0.004
■ Nitrogen	7727-37-9	0.027
■ Arsenic	7440-38-2	0.003
■ Venadium	7440-62-2	0.081
■ Niobium	7440-03-1	0.004
■ Boron	7440-42-8	0.0003

STORAGE RECOMEDATION

Store in a cool well ventilated place in original packing. Open packing while going to be used.

NOTE

- Product is in compliance with substance of Very High Concern (SVHC) i.e. ≤ 0.1 %w/w as per the candidate list promulgated by the European Chemicals Agency (ECHA) which are defined in Article 57 of REACH Regulation (EC1907/2006) checked by Tuv-Nord Group.